

DYNCONNECT Datatransfer Module

Product information



DYNCONNECT

DYNCONNECT is designed to connect vehicles and machines to DYNWEB Cloud Service platform in the easiest and most comprehensive manner in the industry. The device provides standard in-vehicle interfaces such as Ethernet and CAN in addition to its wireless and cellular interfaces. DYNCONNECT's end-to-end management system offers true plug-and-play functionality and allows customers to monitor and manage vehicles and fleets with unrivaled out-of-the-box experience. DYNCONNECT enables applications that range from simple machine data monitoring and data logging, to more advanced functionalities such as prognostics and predictive maintenance.

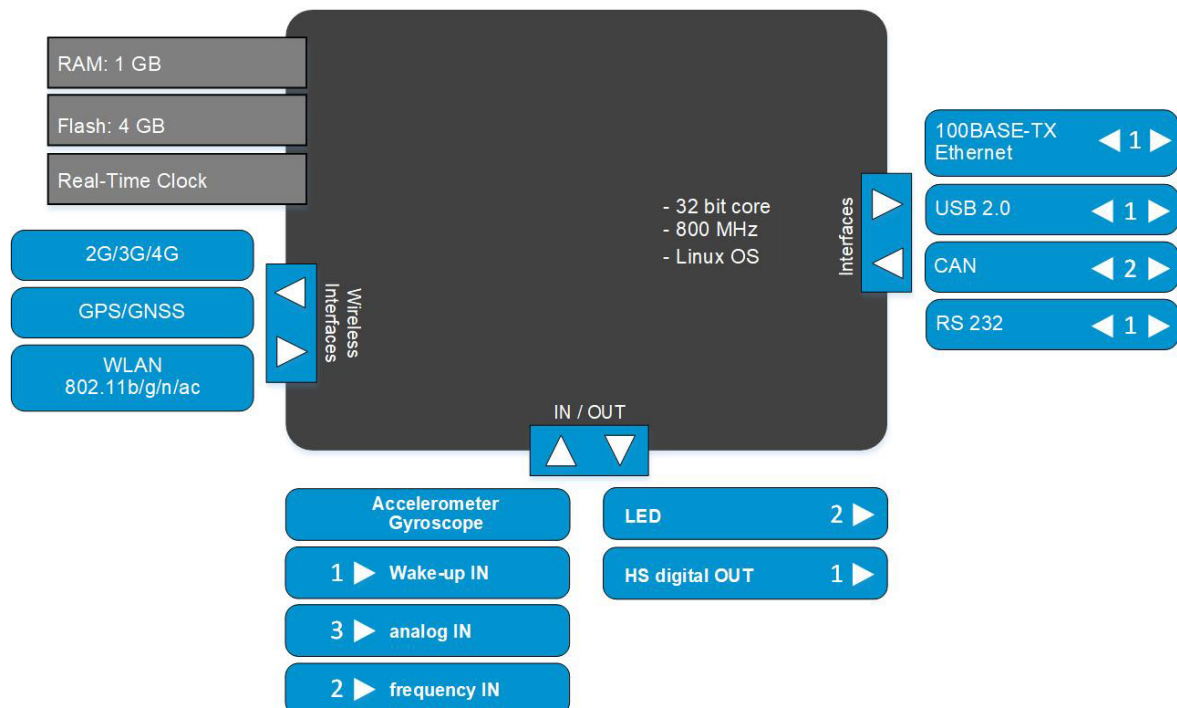
Specification

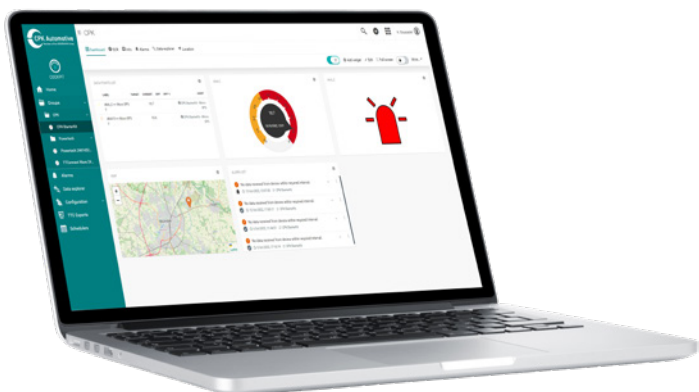
Unit dimensions	176 x 216 x 40 (With fasteners)	mm
Weight	650	g
Operating Temperature	- 40 to + 85	°C
Supply Voltage	6 to 32	V
Peak Voltage	36	V _{max}
Standby Current	3	mA _{max}
Current	1,3	A _{max}

Features

- ✓ Over-the-air updates of complete machine software
- ✓ Simple and intuitive configurable portal: no need for programming
- ✓ Create and configure alarms
- ✓ Access to data in real-time
- ✓ Create and deploy advanced analytics models

Interfaces/Inputs/Outputs





Standards

CE-Mark	2014/30/EU
E-Mark	ECE-R10.05
FCC	Part 15
IC	ICES-003
EMV	ISO 11452-2 ISO 11452-4: 2005
ESD	ISO 13766
Load Dump	ISO 16750-2
Ingression Protection	EN 60529 IP67 ISO 20653 IP 6K9K
Temperature	EN 60068-2-1, -14, -78
Vibration, Shock	IEC 60068-2-64, -27

Unit's housing and connectors with dimensions

